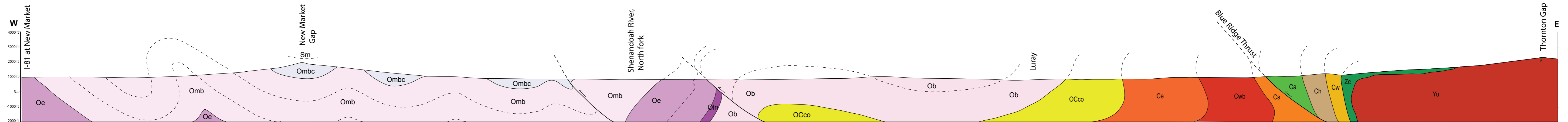


Figure 4



Lithologic Units

Ombc	Martinsburg Fm., Cub SS member <i>Sandstone with thin silt and shale beds</i>	Oln	Lincolnshire-New Market Fms. <i>Light to dark gray crystalline limestone; black chert nodules prevalent in Lincolnshire</i>	€e	Elbrook Fm. <i>Dolostone with ribbon rock beds; occasional thrombolites</i>	€a	Antietam Fm. <i>Quartz arenite; abundant skolithos</i>	Zc	Catoctin Fm. <i>Metabasalt (greenstone) with local pillows and columns; amygdules common</i>
Omb	Martinsburg Fm. <i>Shale, siltstone, and sandstone; calcareous near base</i>	Ob	Beekmantown Gp. <i>Dolostones and limestones</i>	€wb	Waynesboro Fm. <i>Maroon to gray phyllite and shale</i>	€h	Harpers Fm. <i>Phyllite with interbedded dark gray sandstone</i>	Yu	Mesoproterozoic undivided <i>Granitoids (~1040 Ma) and charnockitic gneisses (~1150 Ma)</i>
Oe	Edinburg Fm. <i>Black, micritic limestone</i>	OCco	Conococheague Fm. <i>Limestones with sandy dolostone beds</i>	€s	Shady Fm. <i>Laminated to thick-bedded dolostone, poorly exposed</i>	€w	Weverton Fm. <i>Thick-bedded arkosic quartz pebble conglomerate</i>		